

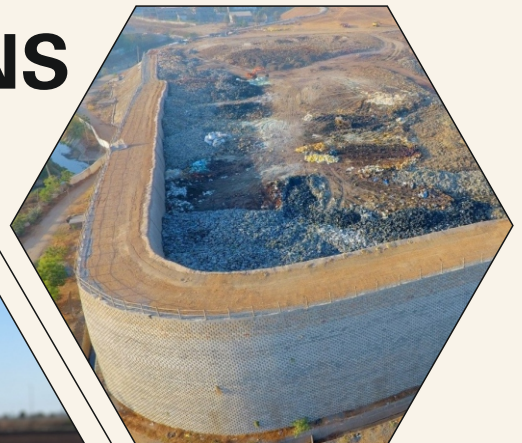


BEST GEOTECHNICS PVT. LTD.



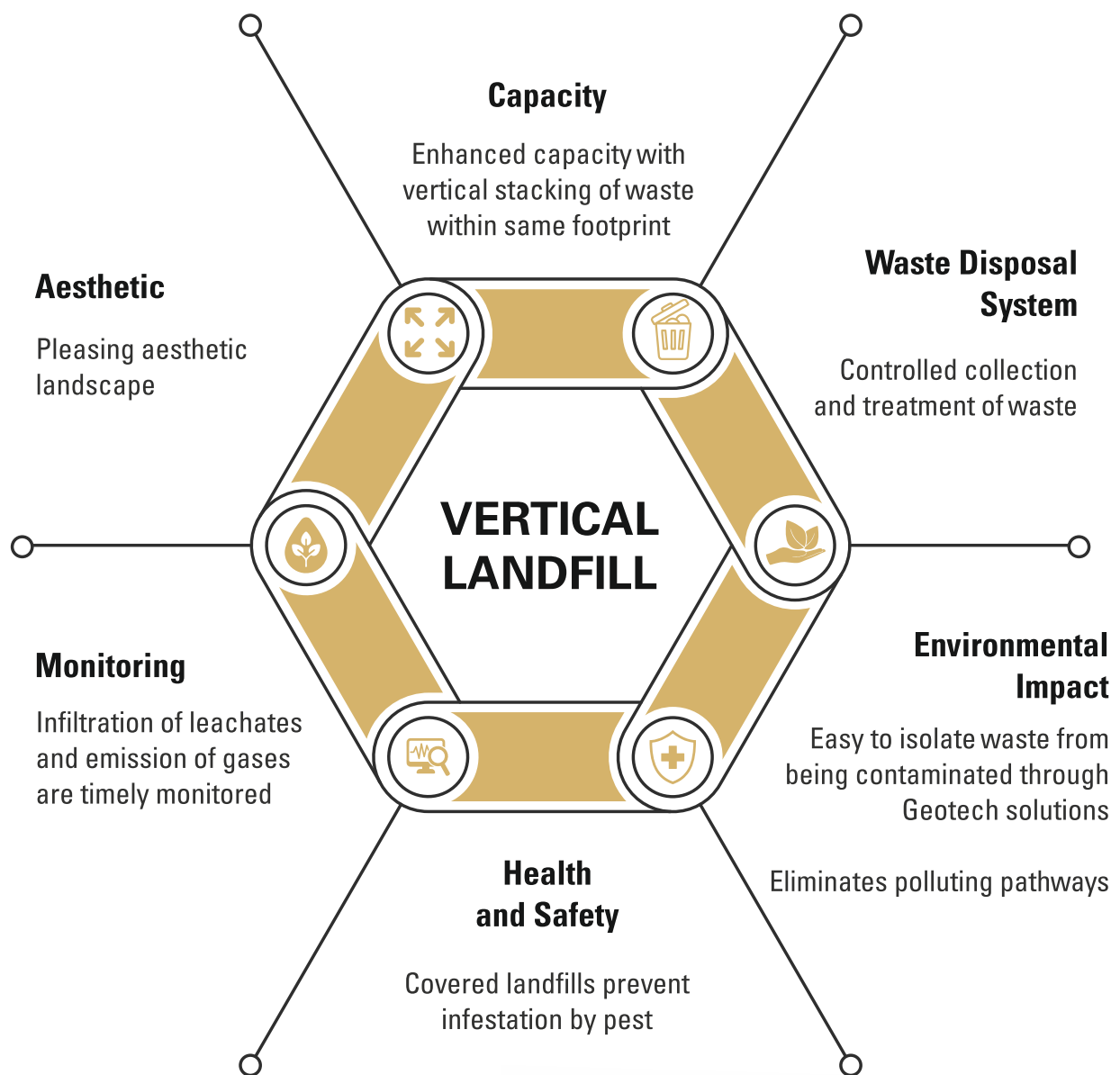
VERTICAL LANDFILL SOLUTIONS

by BestGeotechnics



➤ Introduction

- Vertical Landfills are the preferred solution for areas with land constraint
- Almost 60% land area footprint required as compared to conventional landfill
- Adopted in India & Overseas- successfully implemented with CPCB approvals
- Safe, Secure & Environmentally responsive



Land is scarce.....Adopt vertical landfills

► Completed & Ongoing Projects



- Best Geo helped a private operator design a solid waste landfill with near vertical face. The Industrial solid waste stored within was 6,50,000 MT on a 25,000 sq.m land area with a maximum depth of 15.50 m
- A private operator decided to implement near vertical faced landfill for cells 1 & 2 extension. This extension will contain 2,09,000 MT of solid waste on a 7000 sq.m of land area with a maximum height of 170 m
- A private operator is commercially developing a vertical landfill for storage of solid waste at GIDC-Saykha near Bharuch City which will store 2,18,000 MT of waste on a 81,500 sq.m of land with a structured depth of 170 m



► Our Expertise



30+ Overseas
Project



Specialize in Sustainable
Geotechnical Solutions



Over 12 Years of
Experience



300+ Projects



20+ Ongoing
Construction Projects



Staff of
50+ People

► Work Location AMERICA | AFRICA | ASIA



BEST GEOTECHNICS PVT. LTD.

702, C & B Square, Andheri Kurla Road,
J. B. Nagar, Andheri East, Mumbai - 400059, India.
Tel: +91-022-4605-4948
Tel: +91-913-644-4799
Email: enquiry@bestgeotech.com
www.bestgeotech.com

